

Great ideas need drive.

FRICION LOCKING BUSHES

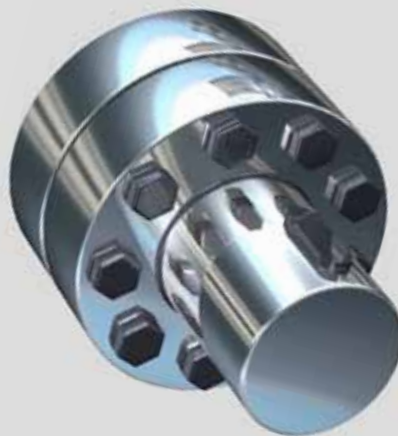
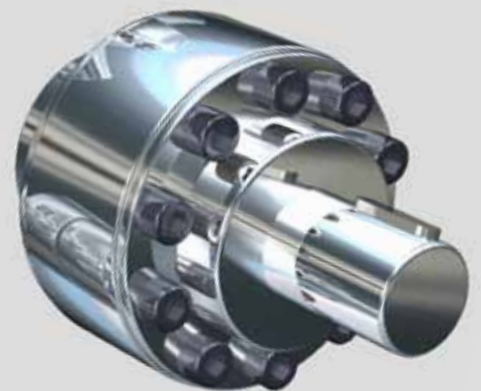
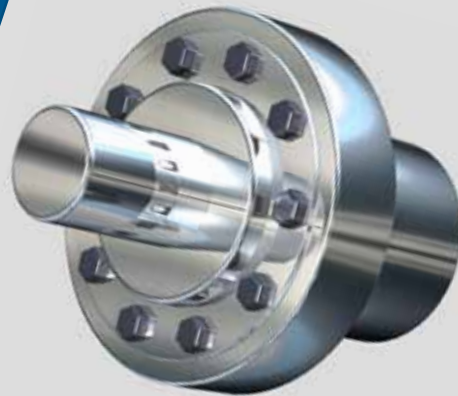
INKOMA-Inkofix-friction locking bushes are non-positive couplers for the simple and problem free assembly and disassembly of machine components.

To select the correct tension unit the transmitted torque, axial load and available space must be considered.

The static and dynamic requirement as well as the drive characteristics need to be taken into account.

THE FOLLOWING FRICTION LOCKING BUSH SOLUTIONS ARE OFFERED

- Inkofix-friction locking bush - ISC
- Inkofix-shrink ring - ISR
- Inkofix-shrink disc - ISS
- Inkofix-tension flange - ISP
- Inkofix-shrink coupling - ISK
- Inkofix-tension sleeve - ISB
- Inkofix-tension set - ISH



INKOMA /ALBERT

Great ideas need drive.

INKOFIX FRICTION LOCKING BUSHES

Inkofix-friction locking bush ISC is a self centering universal coupler for keyless connection of hubs and shafts. Two designs are available, version A for high torque and version B for moderate torque. / See fig. 1

The **Inkofix-tension flange ISP**, transmits torque via an outer and inner ring using friction. This model is suitable for use with INKOMA PK, Lineflex and Inkoflex couplings. The ISP tension flange is available in 3 versions, A, B and C. / See fig. 2

Inkofix-tension sleeve ISB transmits extremely high torque with precise concentricity. / See fig. 3

Inkofix-shrink ring ISR and **Inkofix-shrink disc ISS** are for efficient clamping of shafts and hubs. / See fig. 4

Inkofix-shrink coupling ISK is for the keyless coupling of shafts with the same or similar diameters. / See fig. 5

Inkofix-tension set ISH is for transmission of medium torque with regular concentricity. / See fig. 6

Fig. 1 (ISC/K-A, ISC/L-A)



Fig. 2



Fig. 3

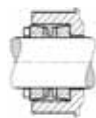


Fig. 4 (ISR, ISS)

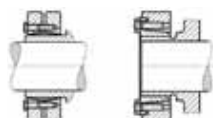


Fig. 5



Fig. 6



© INKOMA 2014
Photography, layout, concept: www.fbwk.at

Request our complete catalogue or visit us on the Internet. You can obtain a free download of our brochure or the product drawing of the selected item using the CADENAS facility.

INKOMA Maschinenbau GmbH
Lange Göhren 14
D- 39171 Osterweddingen
T: +49 [0] 39205 453-0
F: +49 [0] 39205 453-433
info@inkoma.de
www.inkoma.de